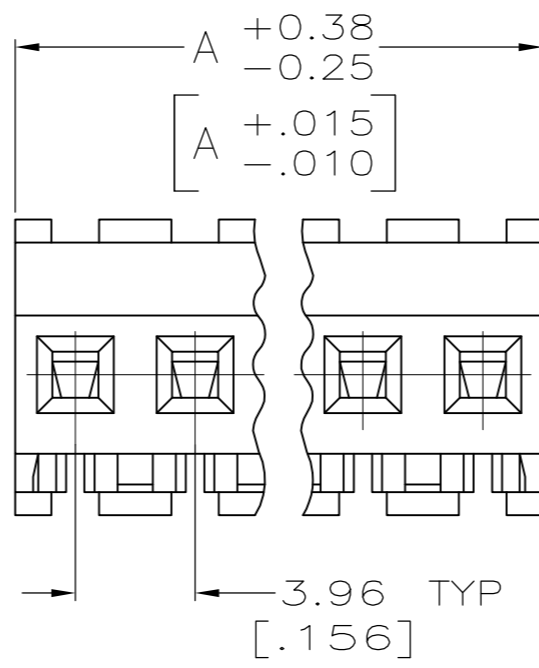
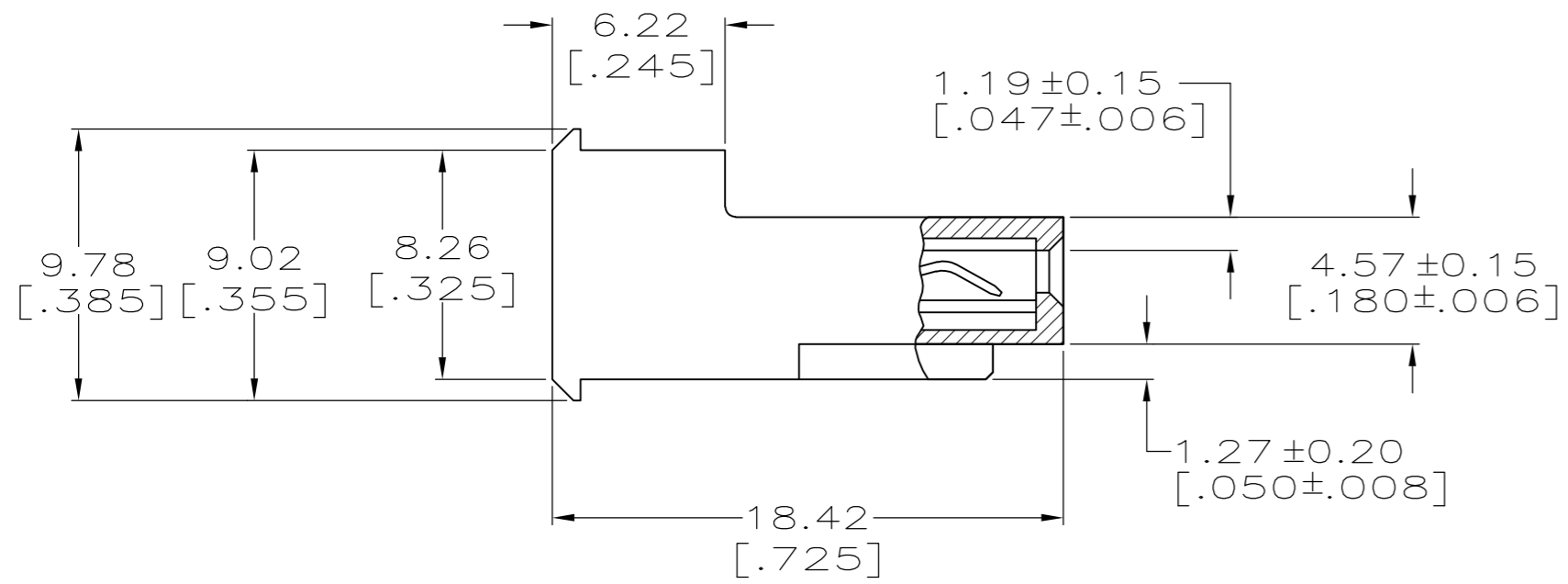
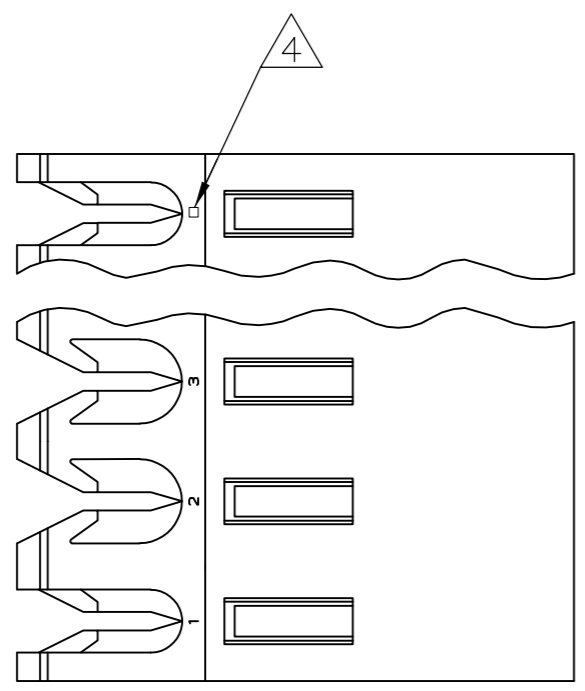


THIS DRAWING IS UNPUBLISHED. RELEASED FOR PUBLICATION
 © COPYRIGHT BY TYCO ELECTRONICS CORPORATION. ALL RIGHTS RESERVED.

LOC	DIST	REVISIONS			
P	LTR	DESCRIPTION	DATE	DWN	APVD
CM	0	L	ECO-07-012879	21JUN07	KW DB



1 MATERIAL:
 CONNECTOR - NYLON UL94V-2 (YELLOW).
 CONTACTS - 0.30[.012] THICK COPPER ALLOY.
 PLATING - 0.0038[.000015] GOLD IN CONTACT AREA.
 0.00203[.000080] MIN THICKNESS BRIGHT
 TIN-LEAD IN SLOT AREA FOR 641174-2 THRU
 2-641174-4 OR MATTE WHISKER MITIGATED
 TIN IN THE SLOT AREA FOR 3-641174-2 THRU
 5-641174-4 OVER NICKEL UNDERPLATE.

- 2. CONTACTS ACCEPT 20 AWG WIRE WITH 2.41[.095] MAX INSULATION DIAMETER.
- 3. CONTACTS MUST ACCEPT 1.14±0.03[.045±.001] SQUARE POST AND REMAIN LOCKED IN POSITION.
- 4 IDENTIFICATION NUMBER FOR LAST CIRCUIT MAY NOT APPEAR ON ALL ASSEMBLIES.
- 5. DIMENSIONS IN BRACKETS ARE IN INCHES.
- 6. HOUSING FEATURES ARE: FEED-THRU WITHOUT LOCKING RAMP.

7 .NOTE DELETED.
 8 NOTE DELETED.

CONTACT FINISH	DIM A	NO. OF CIRCUITS	PART NO.
TIN	95.10 [3.744]	24	5-641174-4
TIN	91.14 [3.588]	23	5-641174-3
TIN	87.17 [3.432]	22	5-641174-2
TIN	83.21 [3.276]	21	5-641174-1
TIN	79.25 [3.120]	20	5-641174-0
TIN	75.29 [2.964]	19	4-641174-9
TIN	71.32 [2.808]	18	4-641174-8
TIN	67.36 [2.652]	17	4-641174-7
TIN	63.40 [2.496]	16	4-641174-6
TIN	59.44 [2.340]	15	4-641174-5
TIN	55.47 [2.184]	14	4-641174-4
TIN	51.51 [2.028]	13	4-641174-3
TIN	47.55 [1.872]	12	4-641174-2
TIN	43.59 [1.716]	11	4-641174-1
TIN	39.62 [1.560]	10	4-641174-0
TIN	35.66 [1.404]	9	3-641174-9
TIN	31.70 [1.248]	8	3-641174-8
TIN	27.74 [1.092]	7	3-641174-7
TIN	23.77 [.936]	6	3-641174-6
TIN	19.81 [.780]	5	3-641174-5
TIN	15.85 [.624]	4	3-641174-4
TIN	11.89 [.468]	3	3-641174-3
TIN	7.92 [.312]	2	3-641174-2
TIN-LEAD	95.10 [3.744]	24	2-641174-4
TIN-LEAD	91.14 [3.588]	23	2-641174-3
TIN-LEAD	87.17 [3.432]	22	2-641174-2
TIN-LEAD	83.21 [3.276]	21	2-641174-1
TIN-LEAD	79.25 [3.120]	20	2-641174-0
TIN-LEAD	75.29 [2.964]	19	1-641174-9
TIN-LEAD	71.32 [2.808]	18	1-641174-8
TIN-LEAD	67.36 [2.652]	17	1-641174-7
TIN-LEAD	63.40 [2.496]	16	1-641174-6
TIN-LEAD	59.44 [2.340]	15	1-641174-5
TIN-LEAD	55.47 [2.184]	14	1-641174-4
TIN-LEAD	51.51 [2.028]	13	1-641174-3
TIN-LEAD	47.55 [1.872]	12	1-641174-2
TIN-LEAD	43.59 [1.716]	11	1-641174-1
TIN-LEAD	39.62 [1.560]	10	1-641174-0
TIN-LEAD	35.66 [1.404]	9	641174-9
TIN-LEAD	31.70 [1.248]	8	641174-8
TIN-LEAD	27.74 [1.092]	7	641174-7
TIN-LEAD	23.77 [.936]	6	641174-6
TIN-LEAD	19.81 [.780]	5	641174-5
TIN-LEAD	15.85 [.624]	4	641174-4
TIN-LEAD	11.89 [.468]	3	641174-3
TIN-LEAD	7.92 [.312]	2	641174-2

THIS DRAWING IS A CONTROLLED DOCUMENT.

DWN B. LEWIS 3-11-96
 CHK R. SWING 3-11-96

Tyco Electronics Tyco Electronics Corporation
 Harrisburg, Pa 17105-3608

PRODUCT SPEC 108-1051
 APPLICATION SPEC 114-1020

MATERIAL - 1
 FINISH -

NAME MTA-156 CONNECTOR ASSEMBLY, 20 AWG, STANDARD

SIZE A2 CAGE CODE 00779 DRAWING NO C-641174 RESTRICTED TO -

CUSTOMER DRAWING SCALE 4:1 SHEET 1 OF 1 REV L

